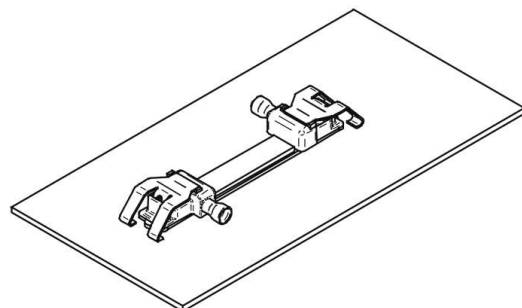
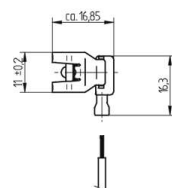
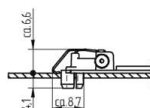
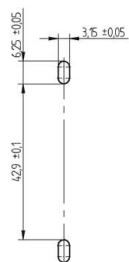


 Create pdf

BJB///OEM-Line

47.318.1100

Push in connector for COB light sources

**pkg. wt. part no.**

336 6 g 47.318.1100.50

**Connector for COBs**

Suitable for the following LED models:

<u>Manufacturer</u>	<u>LED model</u>
Citizen	CL-L104




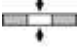
Approval: additional cULus

Snap in pins

Housing: PBT  
Contacts: CuSn

Rating: 3A / 150 VDC

- For easy fixing of COB's - No tools required!
- Panel thickness: 1.3 ±0.1 mm surface coating included
- Strip length: 8+1 mm
- Polarity of LED must be observed
- Specifications of LED manufacturer must be observed
- VDE-Reg. Nr. E063

LED-G-LINE	T 110				
			0.25 - 0.5 mm <sup>2</sup>	0.5 mm <sup>2</sup>	1.3 +/- 0.1 mm

Document generated on: Th, 2. February 2017 - 17:07